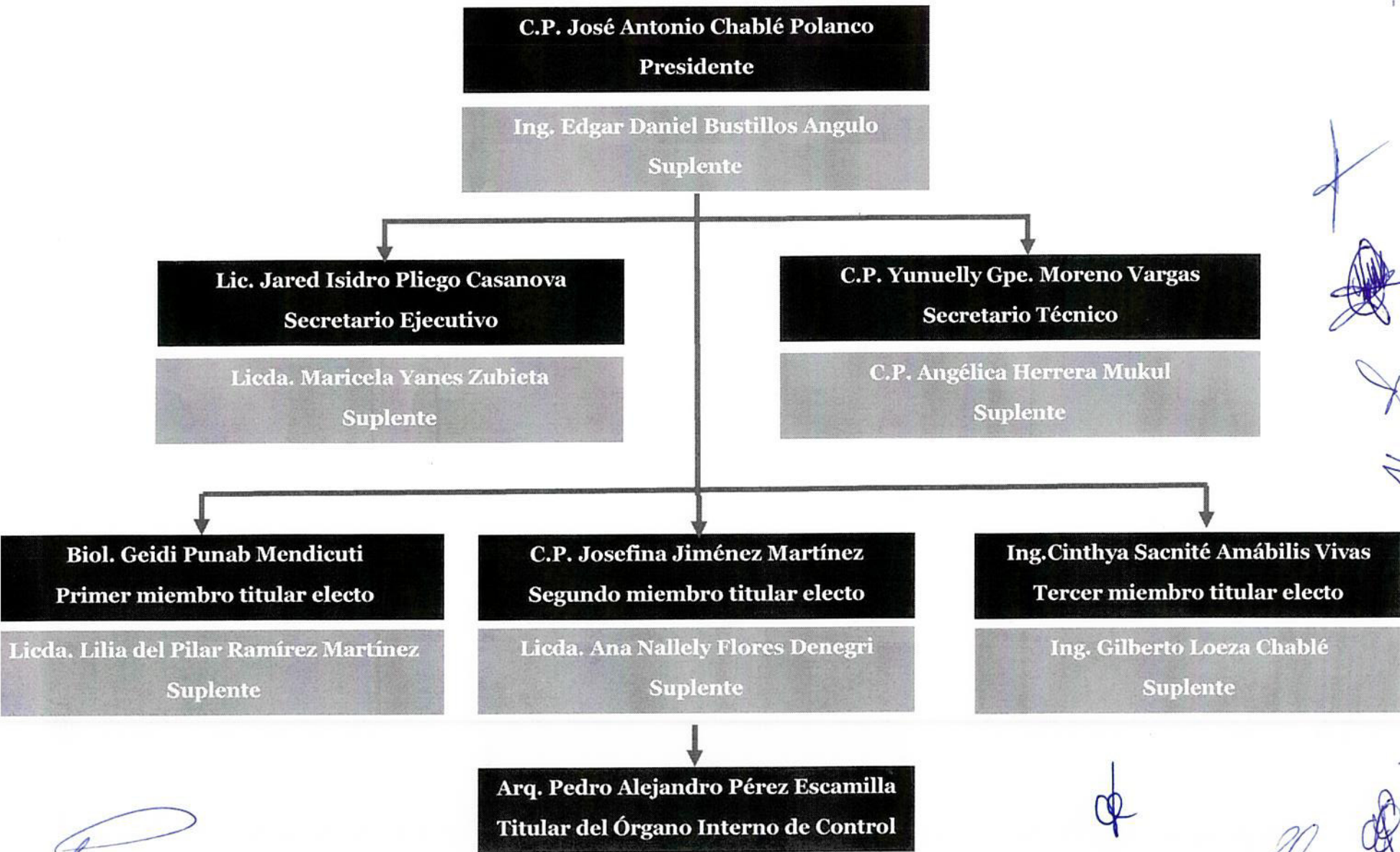




ORGANIGRAMA DEL COMITÉ DE ÉTICA DEL INSTITUTO ESTATAL DE LA EDUCACIÓN PARA
LOS ADULTOS DEL ESTADO DE CAMPECHE.



[Handwritten signatures and initials in blue ink on the right side of the document]

[Handwritten signature in blue ink at the bottom left]

[Handwritten initials in blue ink]

[Handwritten initials in blue ink]

[Handwritten initials in blue ink]